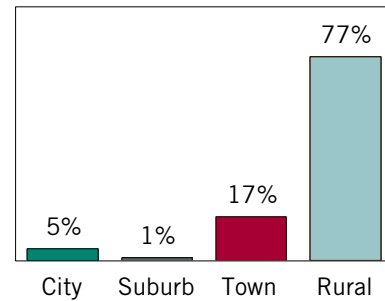


Quick Stats

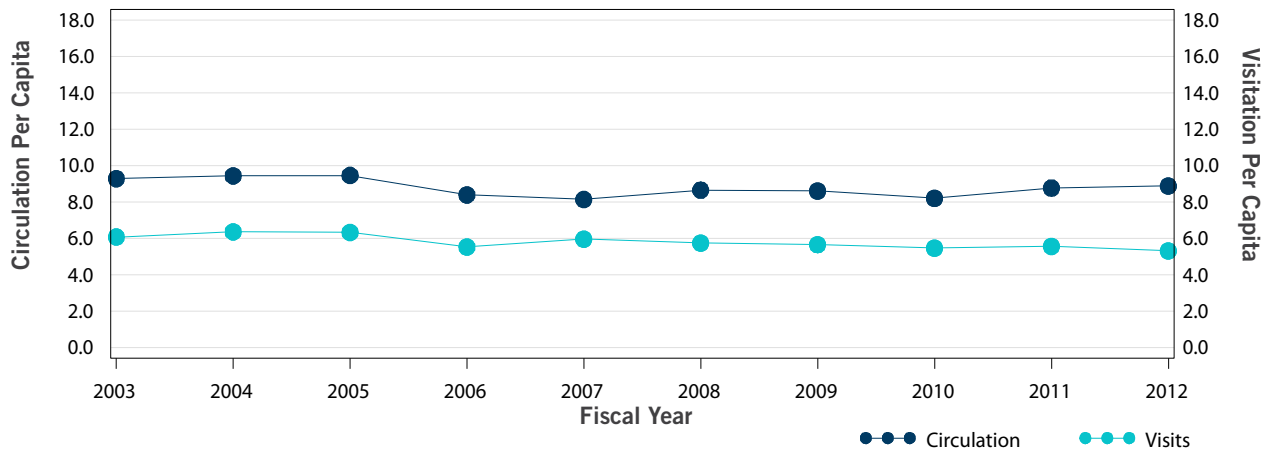
Number of Public Libraries	112
Number of Public Outlets	146
Population Served	752,825
Number of Full Time Equivalent Librarians	183
Number of Full Time Equivalent Staff	361

Public Library Outlets by Locality



Locality based on NCES locale codes.
For additional details see <http://go.usa.gov/YPMW>.

Visitation and Circulation Per Capita (FY 2003-2012)



In Comparison

	FY 2011	FY 2012	% Change	Regional*	National
Services					
Circulation Per Capita	8.77	8.88	▲ 1.22%	9.99	8
Visits Per Capita	5.57	5.31	▼ -4.59%	5.55	4.95
Finance					
Expenditures Per Capita	\$30.66	\$29.87	▼ -2.57%	\$36.95	\$35.47
Operating Revenue Per Capita	\$32.03	\$31.04	▼ -3.10%	\$39.44	\$37.98
Resources					
Print Materials Per 1000 Population	4062.19	3968.84	▼ -2.30%	3418.34	2590.33
Public Use Internet PCs Per Capita	1.54	1.89	▲ 22.55%	1.31	1.13

*The Plains region includes Iowa, Kansas, Minnesota, Missouri, Nebraska, North Dakota, South Dakota
For more information about regions see <http://go.usa.gov/gppk>.