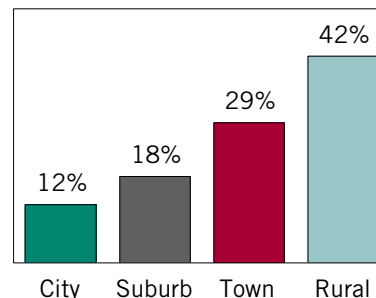


## Quick Stats

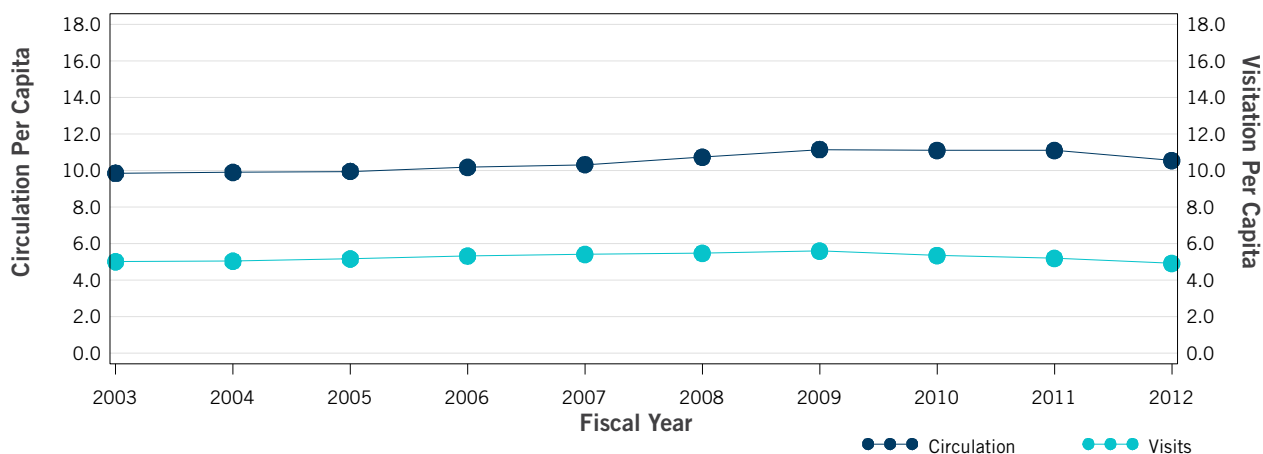
Number of Public Libraries	138
Number of Public Outlets	356
Population Served	5,332,244
Number of Full Time Equivalent Librarians	745
Number of Full Time Equivalent Staff	2167

## Public Library Outlets by Locality



Locality based on NCES locale codes.  
For additional details see <http://go.usa.gov/YPMW>.

## Visitation and Circulation Per Capita (FY 2003-2012)



## In Comparison

	FY 2011	FY 2012	% Change	Regional*	National
<b>Services</b>					
Circulation Per Capita	11.09	10.55	▼ -4.95%	9.99	8
Visits Per Capita	5.18	4.92	▼ -5.17%	5.55	4.95
<b>Finance</b>					
Expenditures Per Capita	\$38	\$36.86	▼ -3.01%	\$36.95	\$35.47
Operating Revenue Per Capita	\$39.64	\$38.69	▼ -2.40%	\$39.44	\$37.98
<b>Resources</b>					
Print Materials Per 1000 Population	2914.27	2843.85	▼ -2.42%	3418.34	2590.33
Public Use Internet PCs Per Capita	1.3	1.21	▼ -7.12%	1.31	1.13

\*The Plains region includes Iowa, Kansas, Minnesota, Missouri, Nebraska, North Dakota, South Dakota  
For more information about regions see <http://go.usa.gov/gppk>.