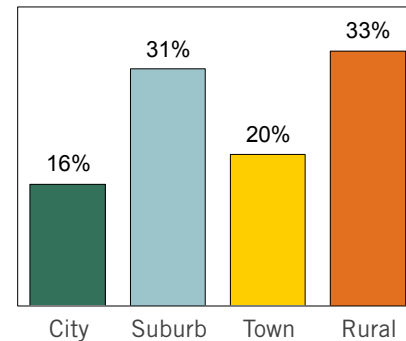


## Quick Stats

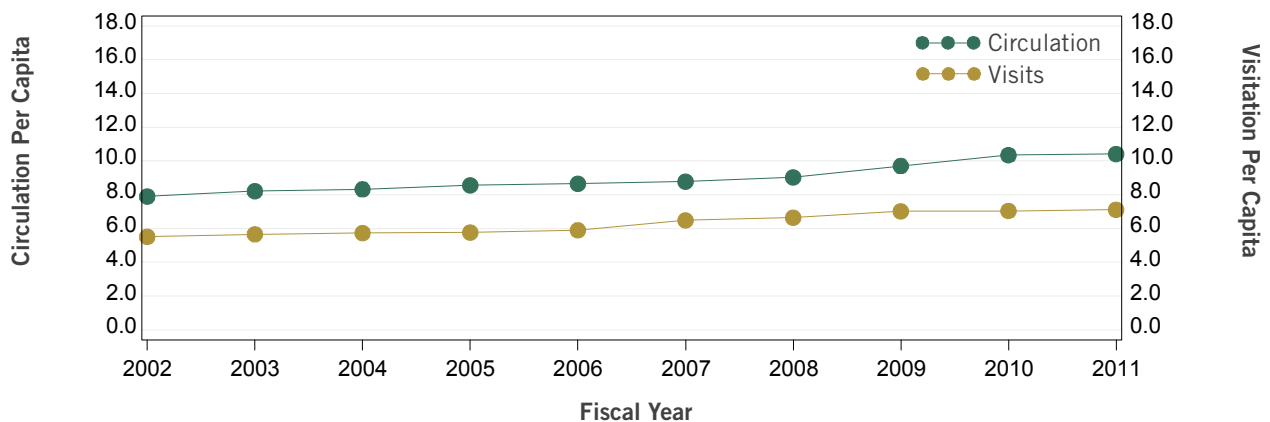
Number of Public Libraries	621
Number of Public Outlets	782
Population Served	11,700,255
Number of Full Time Equivalent Librarians	3,180
Number of Full Time Equivalent Staff	8,756

## Public Library Outlets by Locality



Locality based on NCES locale codes.  
For additional details see <http://go.usa.gov/YPMW>.

## Visitation and Circulation Per Capita (FY 2002-2011)



## In Comparison

	FY 2010	FY 2011	% Change	Regional*	National
<b>Services</b>					
Circulation Per Capita	10.34	10.41	▲ 0.64%	12.26	8.14
Visits Per Capita	7.04	7.11	▲ 0.99%	6.86	5.09
<b>Finance</b>					
Expenditures Per Capita	\$60.73	\$59.28	▼ -2.38%	\$50.67	\$35.83
Operating Revenue Per Capita	\$66.62	\$65.15	▼ -2.21%	\$56.24	\$38.09
<b>Resources</b>					
Print Materials Per 1000 Population	3836.57	3768.36	▼ -1.78%	3759.78	2638.27
Public Use Internet PCs Per Capita	1.48	1.42	▼ -4.42%	1.49	1.14

\*The Great Lakes region includes Illinois, Indiana, Michigan, Ohio, Wisconsin  
For more information about regions see <http://go.usa.gov/gppk>.